

THE RAILWAY PRESERVATION SOCIETY OF IRELAND

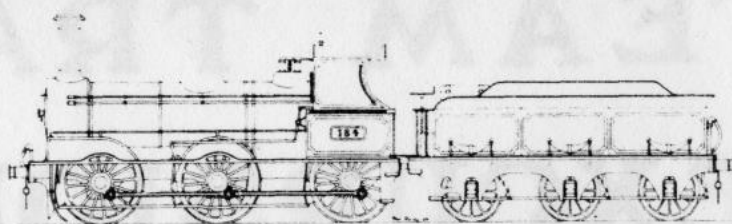
STEAM TRAIN EXCURSION

DUBLIN - BRAY

1979



RAILWAY PRESERVATION SOCIETY OF IRELAND



WELCOME ABOARD OUR STEAM HAULED EXCURSION FROM DUBLIN TO BRAY AND BACK. PART OF THE LINE WE TRAVEL OVER TODAY WAS THE FIRST RAILWAY OPENED IN THIS COUNTRY - THE DUBLIN AND KINGSTOWN RAILWAY - WHICH BEGAN ITS LIFE WAY BACK IN 1834.

Our trip commences from Connolly Station - formerly Amiens Street Station - the original Dublin terminus of the Great Northern Railway.

The stations we pass through on the way to Bray are familiar to all Dubliners. PEARSE (Westland Row) was the terminus of the Dublin and Kingstown Railway opened in 1834. A little further on we pass the site of the Grand Canal Street works of the Dublin and South Eastern Railway now a meat processing factory. Stations like Booterstown, Blackrock and Seapoint are well known as bathing places. Dun Laoghaire (Kingstown) was the terminus from 1837 until the opening of the very unusual Atmospheric Railway to Dalkey in 1844, described as a "Victorian venture in silent speed". Dun Laoghaire is, of course, the port for the Sealink (Mailboat) services to Great Britain.

Leaving Dun Laoghaire we pass through Sandycove, Glenageary, Dalkey with its Tunnel, Killiney and Shankill, the newest station on the CIÉ system opened in June 1977. The original Shankill station was on the Harcourt Street - Bray line (closed 1958) which joined the line of today's trip at Shanganagh Junction, about a mile from Bray.

Bray, opened in 1854 with the line from Harcourt Street, is the terminus of the local train services with Dublin. On arrival, our locomotive will be turned and prepared to make two more trips to and from Dublin, so that as many Dubliners as possible will be able to have the opportunity of travelling behind a steam locomotive. The last trip with our train will leave Bray at 18:00 for Connolly.

TIMETABLE

CONNOLLY STATION	BRAY
Departure	Departure
11:30	12:30
14:30	15:30
16:30	18:00

OUR LOCOMOTIVE

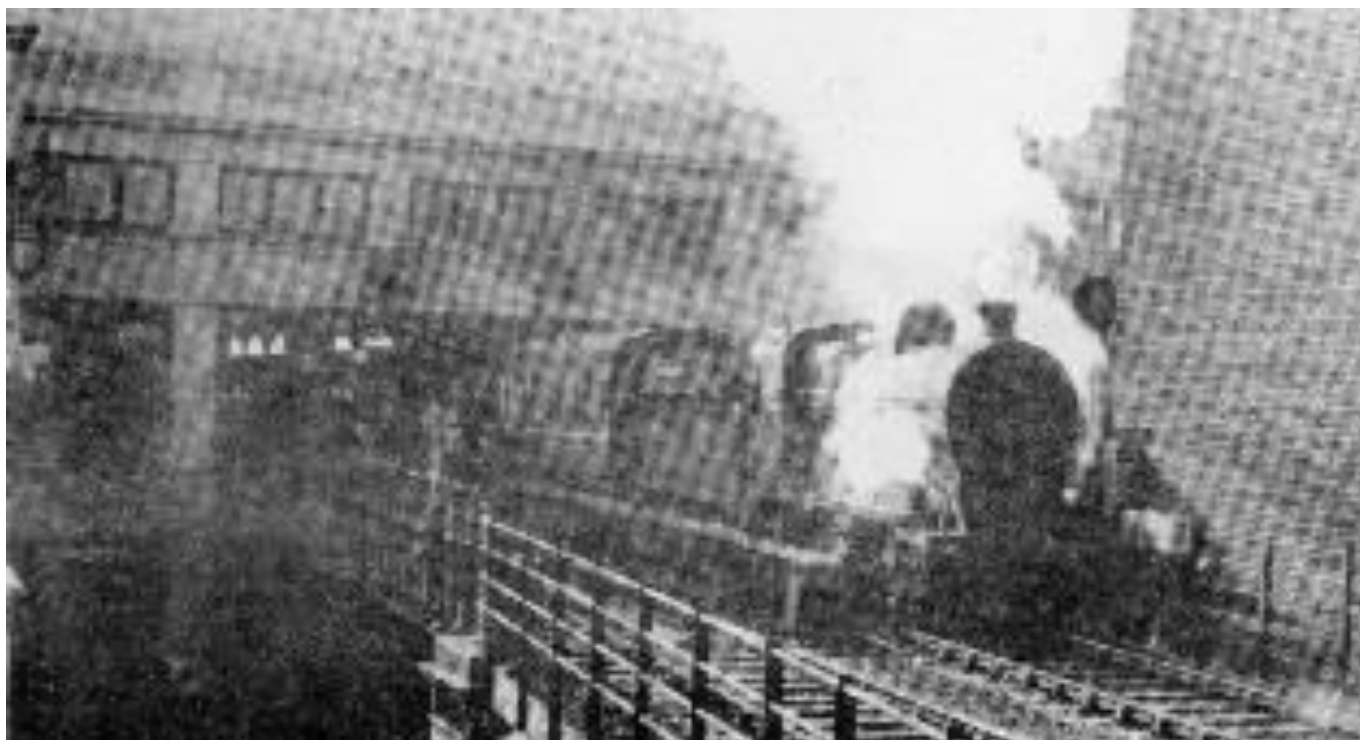
LOCOMOTIVE No.184 was one of over 100 similar engines built for the Great Southern and Western Railway to the design of Alexander McDonnell of Inchicore Works. They were known as the J15s or 101 engines. 184 was built in 1880 at Inchicore. Last year it was overhauled at Mullingar by Society members for use in the film "The First Great Train Robbery", filmed at Heuston Station and on location in the Midlands and Cork. The Society was formed in 1964 and has a number of other locomotives which it operates from its bases at Whitehead (Co. Antrim) and Mullingar to haul enthusiasts to all parts of the country each year.

(Front Cover Photograph: Train at Bray Head)

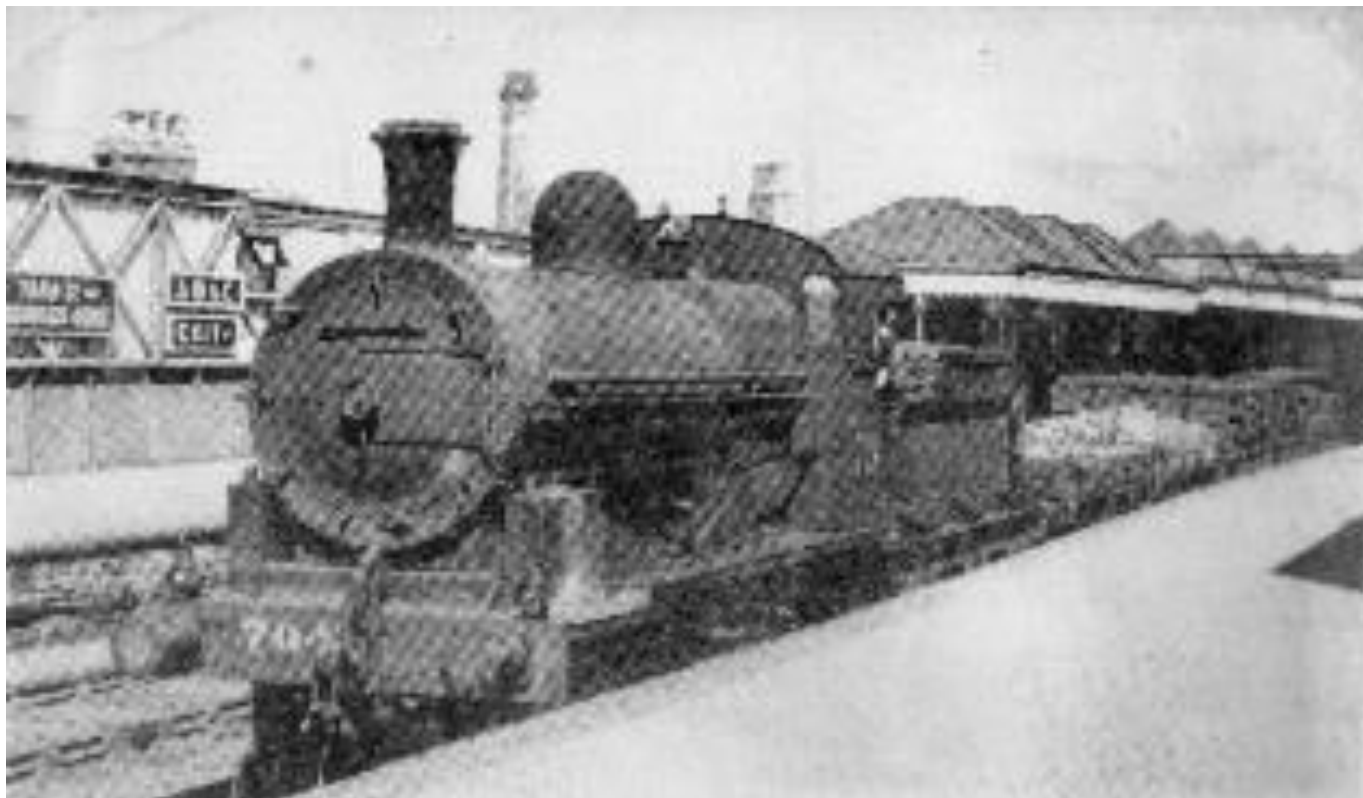
WE HOPE YOU WILL HAVE A PLEASANT DAY AND ENJOY THE TRIP



Train at Kingstown (Dun Laoghaire) Pier Station. (From an old postcard)



J5 Class locomotive No.626 leaving Westland Row with the boat train from Dun Laoghaire in April 1960. (IRRS)



Permanent Way train at Tara Street Station in July 1955. (IRRS)



DSER Locomotive 4-4-0 No. 56 "Rathmines" on an express passing the old Shankill Station on the Harcourt Street - Bray line, closed in 1958. (IRRS)